

# DECEMBER 2016 FLY OF THE MONTH

## December Fly



### CHOCOLATE THUNDER

**Size:** 22

**Family Matched:** Mayflies, Midges

**Life Cycle:** Emerging Nymph or Pupa

**Fly Type:** Generalist

**Pattern:** Chocolate Thunder

Born on the highly pressured and technical tail waters of the South Platte River in Colorado, the Chocolate Thunder is a super effective fly pattern for tempting shy trout! Sharing many elements with other proven tail water flies such as the Black Beauty, Top Secret Midge, and RSII, the foam wing and realistic profile make this fly a deadly match for a host of mayfly and midge species!



13976 West Bowles Avenue, Ste. 200  
Littleton, CO 80127  
Phone: (720) 962-6700  
greg.wambolt@wamboltwealth.com  
www.wamboltwealth.com

While only lasting 4-48 hours, trout will gorge themselves on the dun and spinner mayflies as they cover rivers and lakes in some of the most prolific and anticipated hatches of the year.



### **Parachute Adams**

**Dry/Wet:** Dry

**Fly Category:** Generalist Pattern

**Life Cycle:** Dun or Spinner

**Hook Size:** 12-22

## Spent Spinner Patterns

After mating in flight, the male spinners will rain down across the lake or river followed soon after by the females who expire immediately after depositing their eggs through the surface of the water. In death, their once-proud wings relax at their sides, laying flat on the surface of the water. The carcasses of spent spinners are then gathered by the current as they bump downstream, creating clumps of mayflies that can entice even the most reluctant trout for one final rise.

You don't need to stock every hot new mayfly pattern pushed by the local fly shop. When in doubt or looking for some go-to mayfly patterns, look no further than the *deadly dozen mayflies*, and get ready for tight lines!



### **Rusty Spinner**

**Dry/Wet:** Dry

**Fly Category:** Generalist Pattern

**Life Cycle:** Spent Spinner

**Hook Size:** 16-20

Do you know someone that you'd like to include in our Fly of the Month Club? Please sign up on our website [www.wamboltwealth.com](http://www.wamboltwealth.com) or email

[cindy.alvarez@wamboltwealth.com](mailto:cindy.alvarez@wamboltwealth.com)



### **Glitterwing RSII**

**Dry/Wet:** Wet

**Fly Category:** Generalist Pattern

**Color:** Grey, Olive, Black

**Life Cycle:** Emerging Nymph

**Hook Size:** 18-22

## Emerging Mayfly Dun Patterns

Suspended half in and half out of the water, the emerging mayfly dun pattern imitates the mayfly as it transitions from wet to dry life cycles. The wings of these patterns are usually reduced in size while a clump of yarn off the back imitates the skin of the nymph being left in the surface of the water as the adult dun struggles into the air. This is the last chance for the trout to grab a mouthful of mayfly until they return to the water in their spinner life cycle.

### **Sparkle Dun**

**Dry/Wet:** Dry

**Fly Category:** True-Fly Pattern

**Color:** BWO, Trico, PMD, Sulphur, Green Drake

**Life Cycle:** Emerging Dun

**Hook Size:** 12-22

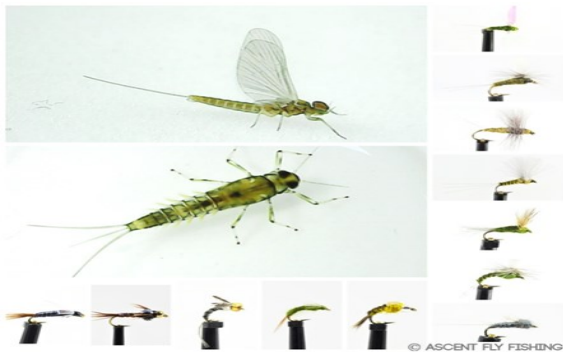
## Mayfly Dun & Spinner Patterns

Matching the sailboat-like profile of the natural with their wings held tall above their back, the defining characteristic of mayfly dun and spinner patterns are the parachute, split-wing, and comparadun-type wings tied perpendicular to the shank of the hook.

## Matching Mayflies: Part II

By: Peter Stitche ©River Oracle Inc.

The importance of the mayfly in the diet of trout cannot be overstated. In my work as an aquatic biologist studying and sampling trout waters across country, I've seen populations of Blue Winged Olive mayfly nymphs crowding Rocky Mountain streams topping numbers of 1,200 nymphs per square meter, slow moving herds of green drake nymphs covering the bottoms of summer streams like the buffalo herds of days gone by, and the Hex hatches rise late each Spring to blot out the moon over the great lakes. Trout will actively track and target mayflies through their entire life cycle, picking nymphs from among the rocks, chasing after emerging mayfly nymphs as they frantically swim towards the surface, and greeting the mayfly spinners with open mouths as they return to the water to lay their eggs and die. Coming from waters crowded with mayfly species and walking into a fly shop with battalions of fly displays lining the walls can overwhelm even the most seasoned angler. For those looking to simplify matching mayflies through their life cycle, look no further than our *Deadly Dozen Mayflies*. By changing up the size and color of these proven patterns, the fly fisher can match a multitude of mayfly species across the county, becoming a force to be reckoned with and feared by trout wherever they wet a line!



## Mayfly Nymph Patterns

Mayfly nymphs patterns are typically tied to straight shank hook in sizes 12-22, but can be tied to hooks as large as a size 6. Accounting for 99.9% of the life of the mayfly, nymph patterns are four-season trout favorites and will be effective on both lakes and rivers at every elevation. Nymph patterns usually have a tightly wrapped thin profile, include hair or pieces of feather that imitate a tail and legs, and often incorporate metal bead heads and wire ribs to help the fly sink.



### **BH Flashback Peasant Tail**

**Dry/Wet:** Wet

**Fly Category:** Generalist Pattern

**Color:** Natural, Olive, Black

**Life Cycle:** Nymph

**Hook Size:** 12-22



### **BH Flashback Hares Ear**

**Dry/Wet:** Wet

**Fly Category:** Generalist Pattern

**Life Cycle:** Nymph

**Hook Size:** 12-22



### **BH Prince Nymph**

**Dry/Wet:** Wet

**Fly Category:** Attractor Pattern

**Life Cycle:** Nymph

**Hook Size:** 12-20



### **BH Rainbow Warrior**

**Dry/Wet:** Wet

**Fly Category:** Attractor Pattern

**Life Cycle:** Nymph

**Hook Size:** 12-20

## Emerging Mayfly Nymph Patterns:

Imitating one of the most vulnerable life cycles of the mayfly, trout eagerly pursue and feed upon the emerging mayfly nymphs in the journey between the sanctuary of the streambed and the refuge of the air. Often tied to a curved shank hook to better match the swimming profile of the nymph, emerging nymph patterns may also include some material tied to the back to imitate the wings of the dun starting to poke through the shuck.



### **Greg's Emerger**

**Dry/Wet:** Wet

**Fly Category:** Generalist Pattern

**Color:** PMD, Olive, Grey, Black

**Life Cycle:** Emerging Nymph

**Hook Size:** 14-22



### **Chocolate Thunder**

**Dry/Wet:** Wet

**Fly Category:** Generalist Pattern

**Life Cycle:** Emerging Nymph

**Hook Size:** 18-22

Continued on next page